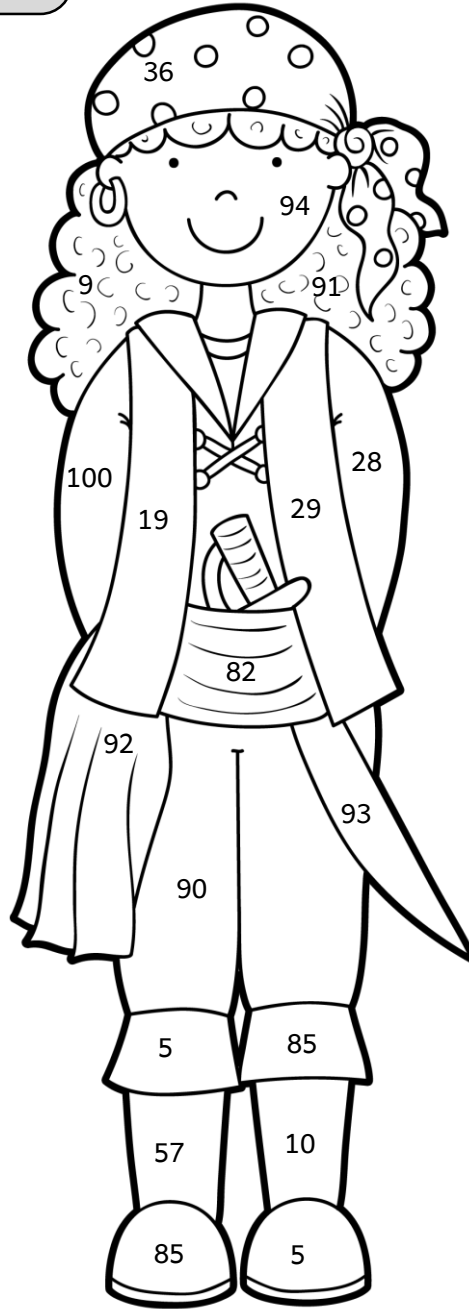
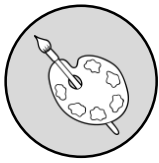


Rechnen und Malen
- Subtraktion und Addition
mit Überschreiten -



$54 + 28 = \underline{\quad\quad}$ (rot)

$66 - 56 = \underline{\quad\quad}$ (braun)

$25 + 66 = \underline{\quad\quad}$ (schwarz)

$73 - 45 = \underline{\quad\quad}$ (grün)

$34 - 15 = \underline{\quad\quad}$ (braun)

$74 + 26 = \underline{\quad\quad}$ (grün)

$76 - 19 = \underline{\quad\quad}$ (braun)

$27 + 65 = \underline{\quad\quad}$ (rot)

$57 - 28 = \underline{\quad\quad}$ (braun)

$41 + 49 = \underline{\quad\quad}$ (schwarz)

$61 - 25 = \underline{\quad\quad}$ (rot)

$39 + 46 = \underline{\quad\quad}$ (braun)

$66 - 57 = \underline{\quad\quad}$ (schwarz)

$38 + 56 = \underline{\quad\quad}$ (hautfarben)

$23 - 18 = \underline{\quad\quad}$ (braun)

$65 + 28 = \underline{\quad\quad}$ (grau)